



Roses in the Heartland

Presents its

2023

# Barossa Rose & Flower Show

1st & 2nd April 2023

Saturday 12:00pm-5:00pm, Sunday 9:00am-4:00pm

at

**Barossa Nursery**

Barossa Valley Way, Nuriootpa

*Official Opening*

&

*Naming of the Australian Lions  
Hearing Dogs Rose*

by

*David Horne, CEO*

*Australian Lions Hearing Dogs*

&

**Ashton Hurn MP,  
Member for Schubert**

*Saturday 1st April: 2:00pm*



## Show Rules and Regulations

The Show shall be administered according to the following regulations.

**Roses** will be judged according to the NRSA standards as outlined in Judging Roses 2013.

**Dahlias** will be judged according to the DSA standards as outlined in Standards and Judging Rules of the Dahlia 1998.

**Cut Flowers** will be judged according to standards outlined in The Australian Horticultural Show & Judges Manual 2001.

**Floral Arrangements** will be judged according to standards as outlined in The Australian Floral Design Association Inc. Manual.

## Regulations & Definitions

- All entries will be free.
- All blooms exhibited must be grown and staged by the exhibitor, except in the Floral Arrangements section.
- Once an exhibit has been staged it must not be moved or removed by another exhibitor. The Show Manager may supervise the movement of exhibits.
- All classes calling for multiple blooms will be deemed Not Necessarily Distinct unless specifically calling for otherwise.
- Stems of blooms must touch water.
- Stems will be counted at the level of the top of the container or the medium used to contain them.
- Exhibitors will be provided with pre numbered exhibit cards which should be placed face down at the front of the exhibit. An entry which does not have an exhibit card will not be judged.
- Exhibits should be correctly named where possible. If the name is not known the card should be marked "unknown". This does not apply to Floral Arrangement classes.
- All exhibits other than Floral Arrangements shall be staged in vases and bottles provided for the purpose.
- Exhibitors to collect Class Cards prior to staging from the Show Co-ordinator at the entry table.
- **DISTINCT:** means different colours or cultivars. (Definitely Different)
- **NOT NECESSARILY DISTINCT (NND):** means same and/or different colours/ cultivars.
- Multi Stem exhibits are to be staged in a single green vase (supplied) excepting the Novice Classes unless otherwise stated.
- **Stem:** A stem is defined as an original stem which carries a single bloom or bud.
- **Cut:** A cut is a stem that carries more than one bloom, and/or bud/s.

## Nominations

Entries are open to all exhibitors and close with the Nomination Co-ordinator, Ian Frick by email [ian.frick12@bigpond.com](mailto:ian.frick12@bigpond.com) telephone 08 8563 0521, by 8.00pm on the Wednesday prior to the show.

There will be no limit to the number of entries per class an exhibitor may stage unless otherwise specified.

Late entries will only be accepted should space become available.

## Preparation and Staging

The Barossa Nursery will be available for preparation & staging from 12pm and will cease at 9.00pm on the day prior to the show. The hall will reopen at 7.00am on Saturday morning. Judging will commence at 10.00am. The exhibition will be dismantled at 5.00pm on Sunday at which time exhibits can be removed.

### Barossa Beauty

#### Barossa Resident Most Successful Exhibitor

**Only Exhibitors living in or the surrounding environment of the following TOWNSHIPS are ELIGIBLE to enter.**

Angaston	Cockatoo Valley	Eden Valley	Freeling
Greenock	Kapunda	Keynton	Lyndoch
Moculta	Mt Pleasant	Nuriootpa	Rosedale
Roseworthy	Sandy Creek	Springton	Tanunda
Truro	Williamstown		

### Barossa Head of Roses

#### Open to RSSA ROSES IN THE HEARTLAND MEMBERS ONLY

As Roses in the Heartland covers a large area, please check that you are ELIGIBLE to enter this class.

#### Exhibitors Requirements in Rose Sections

- Open Section: All exhibitors are eligible to enter.
- Intermediate: Novice exhibitors and 'B' & 'C' grade Rose Society of S.A. Members may exhibit in these classes. This section EXCLUDES 'A' grade Rose Society of S.A. Exhibitors.
- Novice Section: This section is for exhibitors who have NOT won 2 'Novice Championship' Awards or higher in the Barossa Rose and Flower Show.
- Exhibitors who have previously entered in a Rose Society of S.A. Inc. Competition are INELIGIBLE to be classed as a Novice.

## Barossa Beauty

**Class SP 1**      **1 Rose Bloom** (no buds) This rose must be Barossa grown and the class is open to all Barossa residents as per instructions on page 3 of this schedule. **One entry per exhibitor.**

**Prize: \$200 Voucher.**

**Sponsored by Barossa Nursery**



## Barossa Head of Roses

**Class SP 2**      **1 Cut Rose** Any type of rose displaying two or more blooms per stem. **Open to Roses in the Heartland members only. One entry per exhibitor.**

**Prize: \$150**

**Sponsored by Colorado Vines Pty Ltd**



## Knight's Recent Releases

**Class SP 3**      **3 Roses NND** (staged in a single vase) of any rose released in Australia in the last 10 years. Each rose must be named.

**Open to ALL exhibitors. Multiple entries permitted.**

**Prizes 1st - \$300 Voucher, 2nd - \$200 Voucher, 3rd - \$100**

**Voucher Sponsored by Knight's Roses**



## Julius Graham Memorial Award

**Class SP 4**      **1 Stem/Cut RED Rose** Any type of RED rose. **Open to ALL exhibitors. One entry per exhibitor.**

**Prize: \$100**

**Sponsored by Sharyn Perrin**



## SECTION 1: ROSES

### NOVICE

**Staged individually in separate bottles**

- Class 1**      1 Red Rose
- Class 2**      1 White Rose
- Class 3**      1 Yellow Rose
- Class 4**      1 Pink Rose
- Class 5**      1 Striped/Multi-Coloured Rose
- Class 6**      1 Full Bloom rose, no buds permitted
- Class 7**      1 Floribunda rose, more than one bloom
- Class 8**      1 Miniature rose
- Class 9**      3 Roses (any type)

# INTERMEDIATE

## **Class 10 Intermediate Barossa Rose Championship (Points System)**

Hybrid Tea rose – 1 stem, no buds allowed

Floribunda/Shrub rose – 1 cut

Full Bloom rose – 1 stem

Miniature/Miniflora/Polyantha rose – 1 stem or cut

**Each rose to be identified, that is, H.T. Rose, Full Bloom Rose etc and the name of the cultivar if known. Each rose to be staged in a separate container.**

**Classes 17-22 are all NND (Not Necessarily Distinct) & staged in a SINGLE green vase**

**Class 11 Kaleidoscope of Roses - 6 Stems/Cuts Distinct** roses staged in **2 vases** with **3 stems/cuts** per vase with oasis.

**Class 12** Miniature/Miniflora/Polyantha rose – 1 stem or cut

**Class 13** Floribunda rose – 1 cut

**Class 14** Shrub rose, including David Austin Roses – 1 stem or cut

**Class 15** Full Bloom rose – 1 stem

**Class 16** Hybrid Tea rose – 1 stem

**Class 17** Miniature/Miniflora/Polyantha roses – 3 stems or cuts

**Class 18** Floribunda roses – 3 cuts

**Class 19** Shrub roses, including David Austin roses – 3 stems or cuts

**Class 20** Full Bloom roses – 3 stems

**Class 21** Hybrid Tea roses – 3 stems

**Class 22** 3 Stages – Any rose of the same cultivar

## **3 & 4 Stage Definition**

- Bud to Full Bloom.
- Side buds NOT permitted.
- Staged in single vase.
- Each entry must be of the same cultivar.
- Bud means: No petals unfurling, but with some colour showing.

## **Stems & Cuts**

- **Stem:** A stem is defined as an original stem which carries a single bloom or bud.
- **Cut:** A cut is a stem that carries more than one bloom, and/or bud/s.



# OPEN

## Open to All Exhibitors

### All Classes Judged as per the NRSA Judges Handbook

#### **Class 23 Barossa Rose Championship (Points System)**

Exhibition rose – 1 stem

Decorative rose – 1 stem, buds permitted

Full Bloom rose – 1 stem

Floribunda/Shrub rose – 1 cut

Miniature/Mini Flora/Polyantha rose – 1 stem/cut

**Each stem/cut to be identified, i.e. Exhibition, Decorative, etc in addition to the name of the cultivar. To be staged in separate containers.**

#### **Class 24 Kaleidoscope of Roses - 9 Stems/Cuts Distinct Roses staged in 3 vases with 3 cultivars in each vase**

**Class 25** Exhibition Roses – 3 stems, staged in a green vase

**Class 26** Decorative Roses, buds permitted – 3 stems or cuts, staged in a green vase

**Class 27** Floribunda roses – 3 cuts, staged in a green vase

**Class 28** Full Bloom roses – 3 stems, staged in a green vase

**Class 29** Exhibition rose – 1 stem

**Class 30** Decorative rose – 1 stem or cut, buds permitted

**Class 31** Floribunda rose – 1 cut

**Class 32** Full Bloom rose – 1 stem

**Class 33** 3 Stages – Hybrid Tea or Floribunda rose, single cultivar staged in a green vase

**Class 34** 4 Stages Exhibit, – any rose, single cultivar, staged in a green vase

**Class 35** Bunch of Roses – 4-6 stems and/or cuts, staged in a green vase

## **MINIATURE, MINIFLORA & POLYANTHA ROSES**

**Class 36 Kaleidoscope of Miniature, Miniflora &/or Polyantha roses - 9 Distinct roses staged in 3 vases with 3 cultivars in each vase**

**Class 37** 3 Stages Miniature or Miniflora rose – single cultivar

**Class 38** Miniature &/or Polyantha roses – 3 stems or cuts

**Class 39** Miniflora roses – 3 stems or cuts

**Class 40** Miniature/Polyantha rose – 1 stem or cut

**Class 41** Miniflora rose – 1 stem/cut

# OLD GARDEN & OTHER ROSES

Open to All Exhibitors

All Classes Judged as per the NRSA Judges Handbook

Please note cultivar and year of introduction of Old Garden Rose/s

- Class 42** Roses Introduced prior to 1900 – 3 stems or cuts
- Class 43** Striped or Multi-Coloured Roses – 3 stems or cuts
- Class 44** Single Roses – 3 stems or cuts, 5-8 petals
- Class 45** Australian Bred roses – 3 stems or cuts
- Class 46** Shrub roses, including David Austin roses – 3 stems or cuts
- Class 47** Roses Not Elsewhere Enumerated – 3 stems or cuts
- Class 48** Rose Introduced prior to 1900 – 1 stem or cut
- Class 49** Striped or Multi-Coloured Rose – 1 stem or cut
- Class 50** Single rose – 1 stem or cut, 5-8 petals
- Class 51** Australian Bred rose – 1 stem
- Class 52** Australian Bred rose – 1 cut
- Class 53** Shrub rose – 1 stem or cut, including David Austin roses
- Class 54** Roses Not Elsewhere Enumerated – 1 stem or cut

## PRIZES

<b>Barossa Rose Championship: Open &amp; Intermediate</b>	<b>\$30</b>
<b>Kaleidoscope of Roses: Intermediate, Open &amp; Miniature Roses</b>	<b>\$10</b>
<b>Champion Rose Exhibit:</b>	<b>\$10</b>
<b>Novice: Classes 1-9</b>	<b>\$10</b>
<b>Intermediate: Classes 12-22</b>	<b>\$10</b>
<b>Open: Classes 25-35, 37-41</b>	<b>\$10</b>
<b>Old Garden &amp; Other Roses: Classes 42-54</b>	<b>\$10</b>
<b>Grand Champion Rose Exhibit:</b>	<b>\$25</b>
<b>To be selected from the Championships, Kaleidoscopes &amp; Champions of each rose section</b>	

## SECTION 2: DAHLIAS

Open to all members of the Dahlia Society of SA  
Sponsored by the Dahlia Society of South Australia

**Class 55**      **Barossa Dahlia Championship**  
5 blooms any type, staged singly  
1 vase of three blooms any type NND



- Class 56**      1 Giant/Large dahlia, Decorative or Cactus type
- Class 57**      3 Giant/Large dahlias, Decorative or Cactus type, staged in separate vases
- Class 58**      1 Medium dahlia, Decorative or Cactus type
- Class 59**      3 Medium dahlias, Decorative or Cactus type, staged in one vase
- Class 60**      1 Small dahlia, Decorative or Cactus type
- Class 61**      3 Small dahlias, Decorative or Cactus type, staged in one vase
- Class 62**      1 Miniature dahlia, Decorative or Cactus type
- Class 63**      3 Miniature dahlias, Decorative or Cactus type, staged in one vase
- Class 64**      1 Ball dahlia, any size
- Class 65**      1 Pompon dahlia
- Class 66**      1 Exhibition Cactus dahlia
- Class 67**      1 Fimbriated Cactus dahlia
- Class 68**      1 Waterlily dahlia
- Class 69**      1 Single/Orchid or Collerette dahlia
- Class 70**      1 Anemone/Stellar/Peony or un-enumerated dahlia



### SECTION 2A: DAHLIAS

Open to exhibitors who are NOT members of DSSA

- Class 71**      1 Dahlia any type
- Class 72**      3 Dahlias, staged in separate bottles

**Barossa Dahlia Championship:**

1st	\$50
2nd	\$30
3rd	\$20

**Champion Dahlia Exhibit:**

Classes 56-70, 71-72	\$15
----------------------	------

Grand Champion Dahlia Exhibit:	\$30
--------------------------------	------

To be selected from the Championship & Champion Exhibits



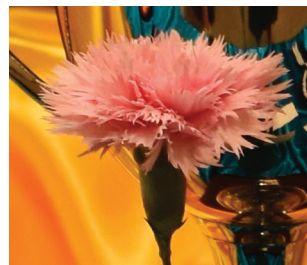


## SECTION 3: CUT FLOWERS

Open to all exhibitors



- Class 73 1 Gladiolus
- Class 74 3 Gladioli, staged singly
- Class 75 1 Gerbera
- Class 76 3 Gerberas, staged singly
- Class 77 1 Carnation
- Class 78 3 Carnations, staged singly
- Class 79 1 Dianthus
- Class 80 3 Dianthus, staged singly
- Class 81 1 Geranium/Pelargonium
- Class 82 3 Geraniums and/or Pelargoniums, staged singly
- Class 83 1 Petunia
- Class 84 3 Petunias, staged singly
- Class 85 1 Alstroemeria
- Class 86 3 Alstroemerias, staged singly
- Class 87 1 Marigold, any type
- Class 88 3 Marigolds, any type, staged singly
- Class 89 1 Cut Tree or Shrub
- Class 90 3 Cuts Tree or Shrub, staged singly
- Class 91 1 Stem/Cut Un-enumerated
- Class 92 3 Stems/Cuts Un-enumerated, staged singly



**Champion Cut Flower Exhibit:**  
Classes 73-82, 83-92

**\$10**

**Grand Champion Cut Flower Exhibit:**  
To be selected from the Champion Exhibits

**\$25**



## SECTION 4: FLORAL ARRANGEMENTS

### NOVICE

#### For Beginners and Inexperienced Arrangers

**Class 93** 'Kaleidoscope of Colour' Table Centre Piece

**Class 94** As You Like It



### OPEN

**Class 95** 'Kaleidoscope of Colour' Table Centre Piece

**Class 96** As You Like It

**Class 97** Book or Song Title. Interpretative Design. Arrangement to be Named

**Class 98** Wreath using fresh or dried plant material. No artificial material allowed.



#### NOTE:

- Foliage permitted in all classes
- All table tops will be white/cream
- 60cm allocated length space unless otherwise noted.
- 75cm depth space unless otherwise noted.
- Judged as per The Australian Floral Art Association Inc. Manual

Champion Floral Exhibit: Classes 93-94, 95-98      \$15

Grand Champion Floral Exhibit:      \$30

To be selected from the Champion Floral Exhibits

## CHAMPION OF CHAMPIONS

Sponsored by Colorado Vines Pty Ltd

Prize: \$200

Selected from the Grand Champions of Sections 1, 2, 3, 4

# SECTION 5: JUNIORS

## CUT FLOWERS

Up to & Including 13 Years of Age

**\*Children MUST stage their own exhibit**

**Class 99** 1 Flower, any number of florets

**Class 100** 3 Flowers, any number of florets, staged in single bottles.

## FLORAL ARRANGEMENTS

Up to and including 13 years of age

**\*Junior Floral Arrangement entries MUST be arranged by the Junior Exhibitor**

**Spacing allowed for each exhibit: 45 cm length by 35 cm depth**

**Class 101** Floral Sand Plate using any plant material. Plate & Sand supplied at workshop

**Class 102** Floating Flowers & Candles. Please bring container. Candles supplied

### Children's Workshop:

*Rosie Sherwood will be conducting a workshop on Friday 31st March at 4:15 pm at Barossa Nursery for children to make their exhibits for the show. Please bring a container and flowers. Extra flowers will be available.*

**For Further Information contact:**

Rosie Sherwood - 0409 692 642

Penelope Schulz - penelopeannes@bigpond.com; 0437 505 010



Prizes for each Class:	1st	\$5
	2nd	\$2
	3rd	\$1
	Champion Exhibit from Classes 99-100, & 101-102	\$10

## JUNIOR CHAMPION OF CHAMPIONS

Sponsored by Colorado Vines Pty Ltd

Prize: \$25

Selected from the Champions of the Junior Section



## Roses in the Heartland

Branch of The Rose Society of South Australia Inc.

For further information on The Rose Society of South Australia's Membership benefits & Membership Form visit the website – <http://sarose.org.au/branches/roses-in-the-heartland/>

**President:** Mrs Mary Frick – 8563 0521; maryf8@bigpond.com

**Secretary:** Sharyn Perrin – 0409 096 369; julsha480@bigpond.com

**Treasurer:** Malcolm Watson

### BR&FS Committee

**Show Manager:** Mary Frick – 0437 187 666

Paul Flavel  
Cathy Giersch  
Sharyn Perrin  
Malcolm Watson

Ian Frick  
John Giersch  
Penelope Schulz  
Ruth Watson

Mary Frick  
Ross Kemp  
Rosie Sherwood  
Lyn Williams



## THE ROSE SOCIETY of SOUTH AUSTRALIA Inc. Perpetual Trophy

The Rose Society of South Australia have continued their support of the Barossa Rose & Flower Show by donating a perpetual trophy for the 'Barossa Resident Most Successful Exhibitor'. Aggregate points for 1st, 2nd, 3rd, Champion & Grand Champion are given for all exhibits entered.

Established 27th August 1908  
[www.sarose.org.au](http://www.sarose.org.au)

